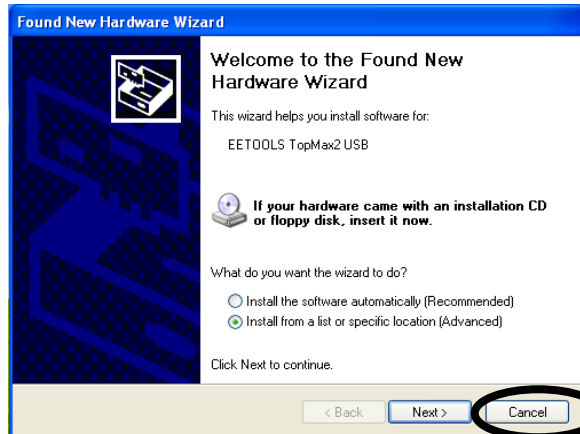
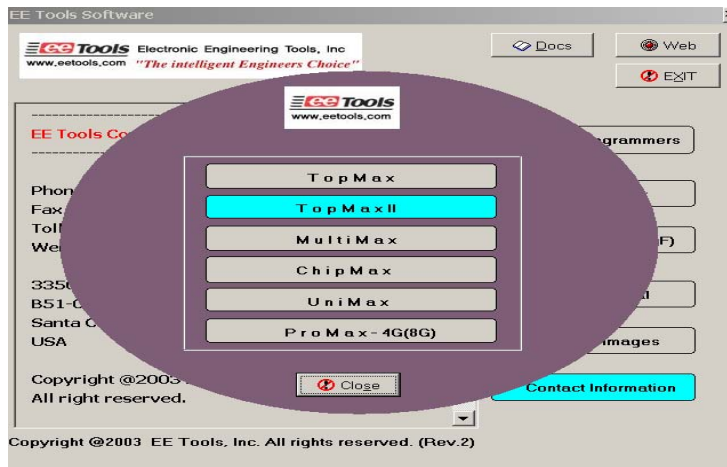


## How to install software and connect to PC for USB programmers

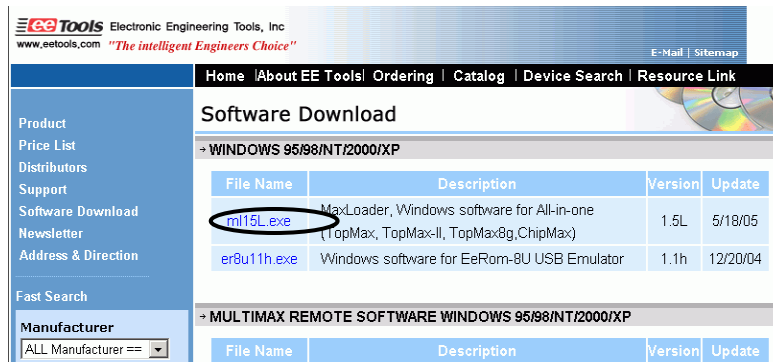
- The software works with Windows OS 98, SE, Me, 2000, And XP.
- Follow the steps below for Windows.
  1. Make sure a programmer is not connected to your computer, then turn on your computer.
  2. Note: If you see New Hardware Wizard screen and disconnect your programmer. You cannot install programmer software that way.



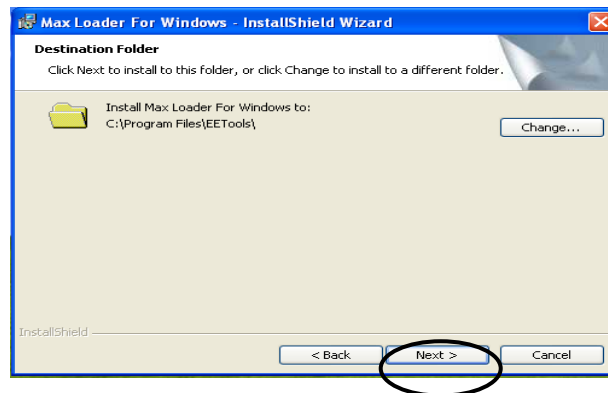
3. Insert the CD-ROM from factory (EE Tools) in your CD-ROM or DVD driver.
4. Wait until you see this screen then Click on Device Programmers and choose a programmer name. The executable file name for the installation is in the CD-ROM.



Note: Customers who want to install the latest software may download the maxloader file from [www.eetools.com](http://www.eetools.com)

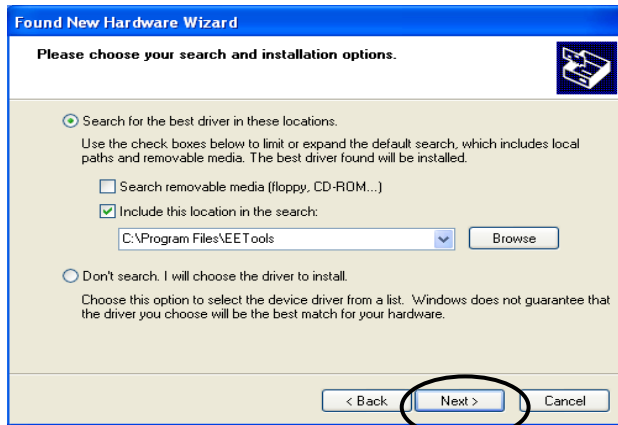


## 5. Set up maxloader software

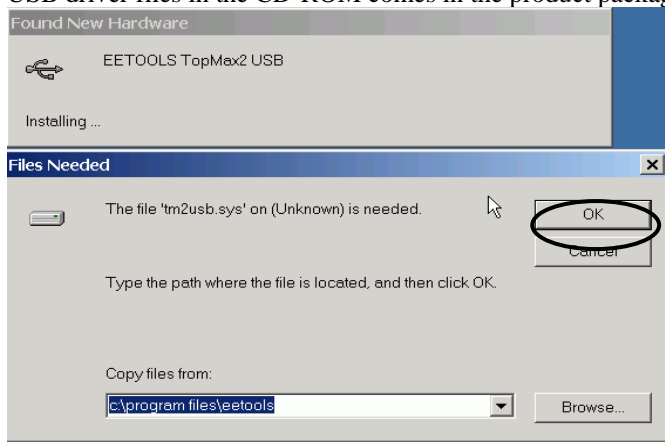


6. Install Maxloader and the maxloader icon and USB driver (eetusb.inf and eetusb.sys files) will be generated in directory C:\program files\EE Tools.
  - Follow the steps below for installation for USB 2.0 driver.
7. Connect a USB cable between programmer and your computer and turn the power switch ON after connecting the power cord in the programmer.

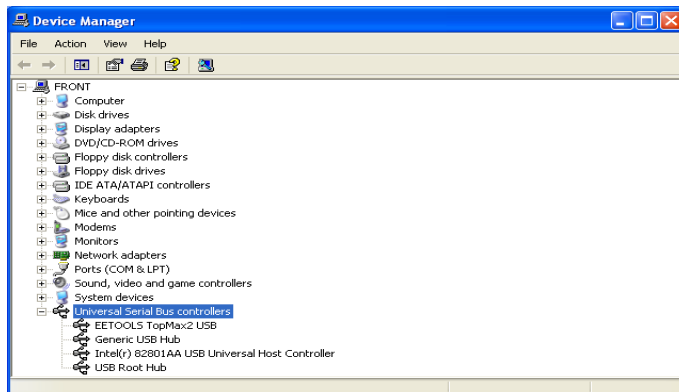




Note: In Windows2000, you need to choose "specific location" when the "Found New Hardware Wizard" appears. The USB driver files are generated in directory C:\program files\EE Tools. Or you can find the USB driver files in the CD-ROM comes in the product package.



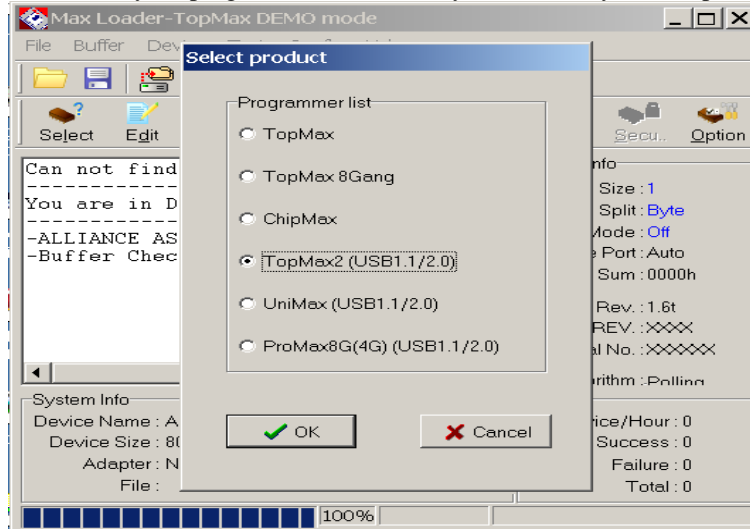
8. Click on the Finish button on the Wizard screen and you can confirm the USB driver in Device Manager in your computer system.



Note: For a computer that doesn't installed USB 2.0 controller, you need to install USB 2.0 driver for the particular product vendor.

9. Execute Maxloader and choose Programmer model

10. Choose your programmer that is ready to be use in your computer.



Note: Watch the model name in left-up corner screen and the TopMaxII won't be ready if "DEMO mode" appears in the screen. Check the USB cable and turn on the AC switch in the back side of unit.