



How to test “Protection Enable, Disable” in MaxLoader.

Download maxloader greater than V3.2h before test this feature.

Make a binary data (A.BIN) for programming AT28HC256E

Make a binary data (B.BIN) for programming AT28HC256E-normalWrite

(In edit mode, click on “fill ran” and save as “A.BIN” or “B.BIN”)

(A. bin & B.bin files are different file)

For **Enable** Option test,

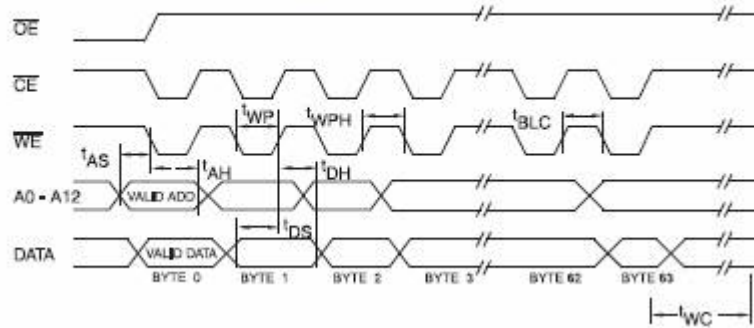
1. Select AT28HC256E (this algorithm will program both “Enabled” and “disabled” devices)
2. A.bin file open
3. Click on “Enable” in option and program & verify-This operation allows to “protect” the EEPROM after program/verify. (you should see “pass” for both operations and EEPROM should be “protected”)
4. AT28HC256E-normalWrite (This operation only allows program, it will display an error if the current EEPROM status as “protect mode”)
5. Open B.bin file and program & verify
6. You will get an error here because your chip has been “protected”
7. The verification should be passed if you load the previous file A.bin in the buffer.

For **Disable** Option test,

1. Select AT28HC256E (this algorithm will program both “Enabled” and “disabled” devices)
2. A.bin file open
3. Click on “Disable” in option and program & verify-This operation allows to “non-protect” the EEPROM after program/verify. (you should see “pass” for both operations and EEPROM should be “non-protected” after)
4. AT28HC256E-normalWrite (This operation only allows program, it will display a no error because your EEPROM already disabled)
5. Open B.bin file and program & verify
6. You will get no error here because your chip has been “non-protected”
7. The EEPROM now has B.bin data after #5 step.

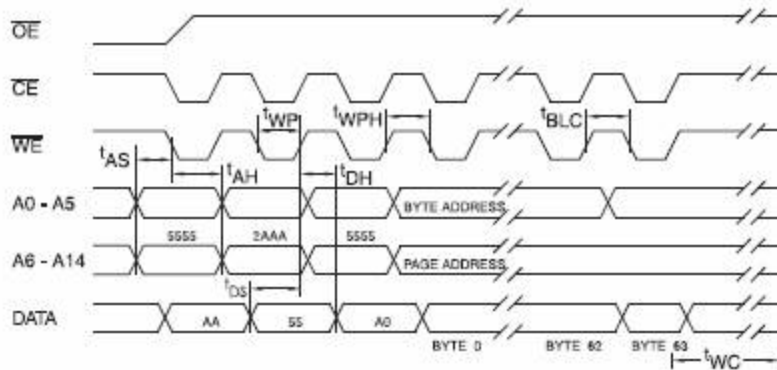
Waveform for **AT28HC256E-normalWrite** algorithm. The enabled EEPROM cannot be programmed with this algorithm.

17. Page Mode Write Waveforms⁽¹⁾⁽²⁾



The following waveform should program EEPROM **regardless** the protection options.

21. Software Protected Write Cycle Waveforms⁽¹⁾⁽²⁾



Contact info@eetools.co for further question.



4620 Fortran Drive, Ste 102
San Jose, CA 95134
Tel: (408)263-2221
Fax: (408)263-2230