

## How to Protect(LockOut) booth blocks in Maxloader

TMEL AT29Cxxx device family has the “LockOut” function for 2 booth blocks.

Here how to use the Lockout feature in maxloader menu:

1. Select Atmel AT29Cxxx device.
2. Load a file Program and program it
3. Make sure that you verify after programming
- 4 After program the device correctly, click on Option button and set up the lockout status
5. Click on “Read Boot Block Status” in Option and you can see the status of Lockout information in the device. If you can see the same status below, the device is not locked and you can execute the lockout for the device.

**Lower(First) Boot Block: Lockout Deactivated.**  
**Upper(Last) Boot Block: Lockout Deactivated.**

6. You can lock 2 areas in AT29c010A device.

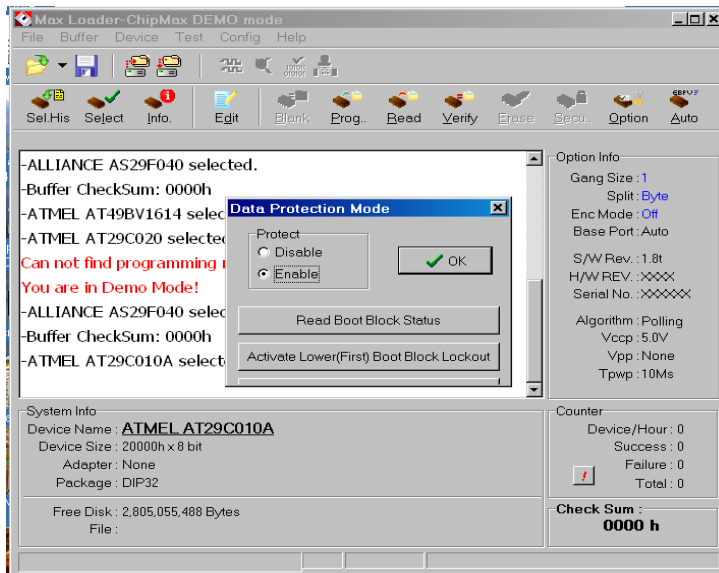
For the first 8K booth block locking, click on “Active Lower(First) Boot Block Lockout” button.

For the last 8K booth block locking, click on “Active Upper(Last) Boot Block Lockout” button.

7. Confirm the locking status after clicking the “Read Boot Block Status”.

-> “Activated” means the block is Lock(protected)

**Lower(First) Boot Block: Lockout Activated.**  
**Upper(Last) Boot Block: Lockout Activated.**



Please contact [support@eetools.com](mailto:support@eetools.com) for further questions.